

## CRM Group

From years, the **CRM Group** is involved **in improving** the process and **products** in the metal industry. The industrial systems developed inside the Sensors And Measurements department are particularly devoted to help controlling the process and ensuring the **quality of the products**.

The industrial conditions in which these sensors have to operate, allow to cope with most production environments. Therefore, these developments could find **applications in other sectors** such as glass, paper, ...



## Competencies

The **CRM Group** staff has developed advanced skills in: **spectroscopy**, continuous and pulsed **lasers**, **on-line microscopy**, optical design, visible and infrared cameras, specific **lighting**, home-made electronic hardware and software, data analysis and signal processing, **image processing** algorithms, **real-time** and **multi-threading** software, adapted mechanics, housing and cooling for **harsh and hot environment**, closed-loop control, ...



*“To develop environment friendly processes & products for a sustainable future is our priority”*

### CRM Group

Avenue du Bois Saint-Jean 21, P59  
B-4000 Liège

### Contacts :

G. Moreas - [genevieve.moreas@crmgroup.be](mailto:genevieve.moreas@crmgroup.be)

G. Monfort - [guy.monfort@crmgroup.be](mailto:guy.monfort@crmgroup.be)

V. Tuset - [vittorino.tuset@crmgroup.be](mailto:vittorino.tuset@crmgroup.be)

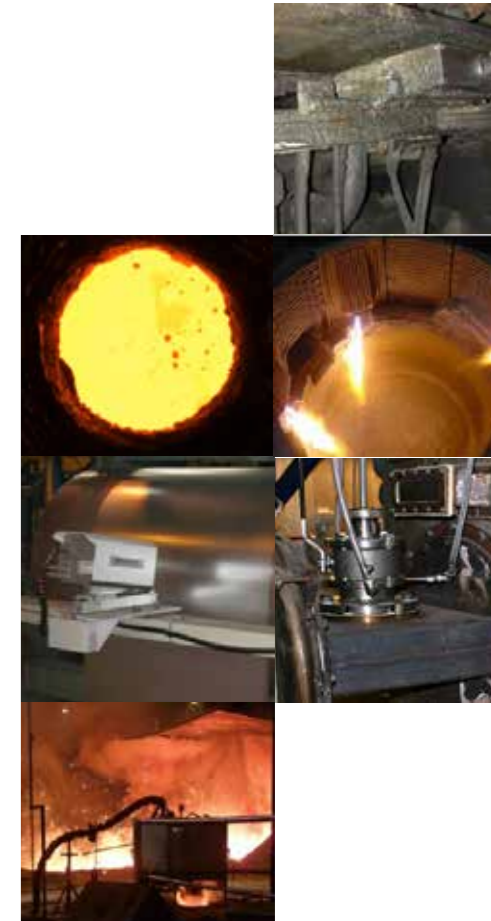
J. Borlée - [jean.borlee@crmgroup.be](mailto:jean.borlee@crmgroup.be)

[www.crmgroup.be](http://www.crmgroup.be)



# CRM GROUP

*SENSORS & MEASUREMENTS*

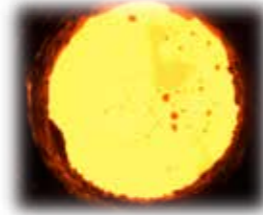


*“Turning on-line measurements into optimum quality”*

## An Outline of sensors ...

### Liquid level measurement

- o Measurement of liquid level in harsh conditions: high temperature, dust, ...
- Focus laser beam onto a molten metal surface



### Dynamic positioning

- o Continuous follow-up of the position of mechanical parts to allow closed loop control during production
- Adjust the distance between the wipers to optimise the galvanising process



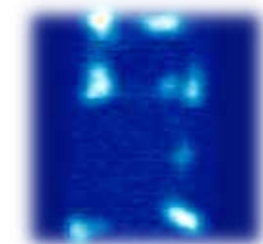
### CrossBow Meter

- o Continuous shape measurement of highly reflective product
- Shape measurement of galvanised strip to continuously control the position of the guiding rolls and to improve the homogeneity of the coating thickness



### Infrared vision

- o Characterisation of products using temperature and emissivity
- On-line monitoring of steel pickling



### RollScope

- o On-line visualisation and analysis of moving surface in very harsh environment
- Continuous control of roll degradation in steel rolling



### OLM - On-Line Microscopy

- o On-line characterisation of moving surface (up to 30m/s) at microscopic scale



### GaScope

- o On-line characterisation of microstructures and surface textures
- Real-time quality assessment of galvanized coating



### SRM - Surface Roughness Measurement

- o On-line quality control of roughness
- Timely detection of wear of rolls and improper roll forces



### WaviSurf

- o Waviness and roughness measurement for quality assessment
- Better control of process conditions and product quality



### FlowLIBS

- Control of the blast furnace by continuously monitoring the composition and temperature of the molten hot metal
- Analysis of the silicon concentration in the runner

### Serafin

- Control of preheating and oxygen lancing in Electric Arc Furnaces
- Optimisation of the operating pattern and blow-back prevention

### OTTM - Oxide thickness and temperature measurement

- On-line thin coating quality control
- On-line FeO thickness measurement at nanometer scale

### Blade wear monitoring

- Shape control of moving profiles
- Monitoring of side-trimmer degradation in strip production

### Paralign

- Guiding rolls alignment in all kind of continuous lines by use of optical gyroscopes

